



Data2Bio, LLC
2052 Roy J. Carver Co-Laboratory
1111 WOI Road
Ames, IA 50011-1085
questions@data2bio.com

Sample Submission for Tissue (to be used for DNA isolation)

(Updated 12/13/2018)

Sample Requirements:

We prefer that you send us lyophilized (i.e. freeze dried) tissue samples. If you do not have the equipment on site for freeze drying you can overnight at room temp fresh tissue samples to us and we can lyophilize them at our facility. If you will be submitting large numbers of tissue samples, cannot lyophilize them, and are not confident mailed samples will reach us within twenty-four hours please contact us at questions@data2bio.com to discuss a number of other strategies which can be employed for tissue sampling. Please do not send us frozen tissue samples as it is much more difficult for us to grind and extract DNA from samples which were frozen without being dried.

For tGBS projects we ask that tissue samples be submitted in a 96 well format. For all projects, be sure the amount of tissue collected fits loosely in the container (96 well plate, 1.5 mL or 5 mL tube etc). Tubes where too much tissue has been shoved into too small a space are also much more difficult to grind.

For tGBS projects we ask for ~30 mg of freeze-dried (lyophilized) tissue per sample. We might be able to work with as little as 10 mg and samples should not be more than 100 mg of dried tissue per sample.

Supported tissues:

Plants:

- We prefer young leaf tissue as they are both easy to grind and provide a high yield of purified DNA per unit of input tissue.
- We have also had success in extracting DNA from older leaves, stems, roots, pollen, fruits, roots, starchy tubers, and dried seeds. However please let us know if you will be submitting one of these tissues as it may influence our estimated completion date and/or quoted price.

Animals:

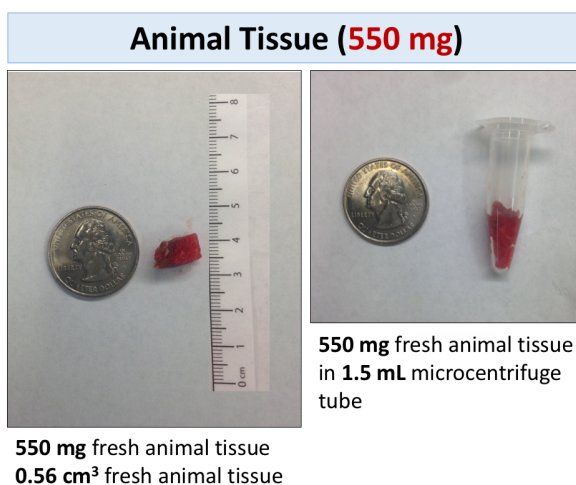
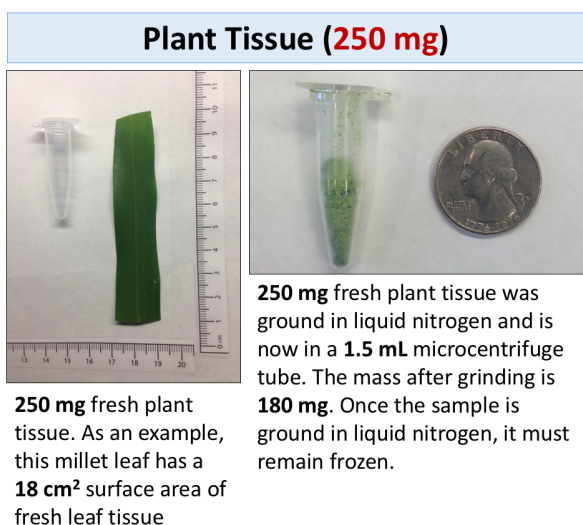
- At this time we do not offer DNA extraction from animal tissues in house. We ask our customers performing genotyping in animal species to submit DNA samples.

Fungi:

- Please contact us at questions@data2bio.com

Please see pictures below for details about **preferred** and **maximum** tissue amounts required.

Preferred Tissue Amounts for BSR-Seq and gBSA



Note: Please send muscle tissue

Maximum Tissue Amounts for BSR-Seq and gBSA

Plant Tissue (1,000 mg)



1,000 mg fresh plant tissue. As an example, these millet leaves have a **63 cm²** surface area of fresh leaf tissue



Fresh ground plant tissue in **15 mL** conical tube

Animal Tissue (1,000 mg)



1,000 mg fresh animal tissue
1.2 cm³ fresh animal tissue

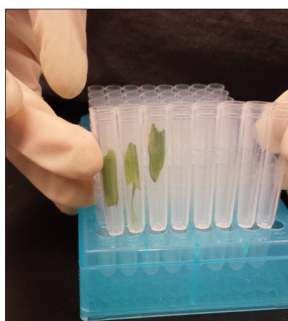


1,000 mg fresh animal tissue in **1.5 mL** microcentrifuge tube

Note: Please send muscle tissue

Tissue Amounts for tGBS Experiments

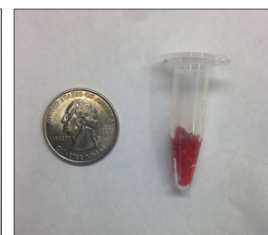
Plant Tissue



Animal Tissue (500 mg)



550 mg fresh animal tissue
0.56 cm³ fresh animal tissue



550 mg fresh animal tissue in **1.5 mL** microcentrifuge tube



Data2Bio, LLC
2052 Roy J. Carver Co-Laboratory
1111 WOI Road
Ames, IA 50011-1085
questions@data2bio.com

Shipping:

When you are ready to mail your samples please send the tracking number and a copy of your sample list to: SampleSubmission@data2bio.com

Ship your samples to:

Data2Bio LLC
Attn: Lisa Coffey
2052 Roy J. Carver Co-Laboratory
1111 WOI Road
Ames, IA 50011-1085

It is also important to time the shipment of your samples so they will arrive on a weekday rather than a Saturday, Sunday, or US Holiday. For an updated list of US holidays which may influence package delivery check this website:
<http://www.theholidayschedule.com/post-office-holidays.php>

Additional Notes:

Some projects rely on data provided by the client rather than (or in addition to) data generated by Data2Bio. Client-supplied data are expected to arrive at Data2Bio at project initiation (e.g., when samples are provided). Delays in supplying such data are likely to delay project completion.